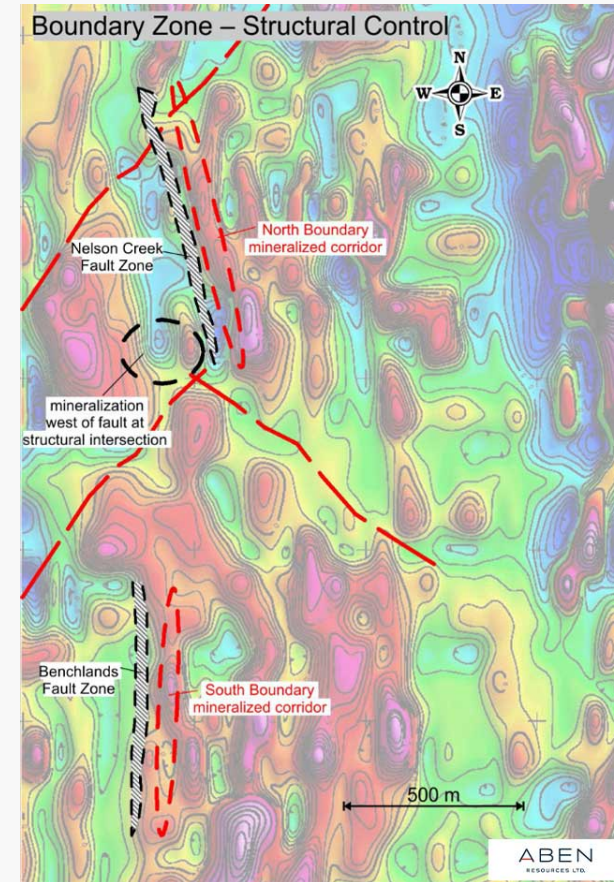


Boundary Zone

Structural control on mineralization is evident at both North (upper) and South Boundary (lower). Structural intersections between dominantly North oriented fault zones and older NE and NW trending faults are highly prospective for the discovery of precious metal mineralization.

- The black ellipse marks and area where apparent structures (red dashed lines) merge with a zone of surface gold mineralization along the flanks of magnetic highs.

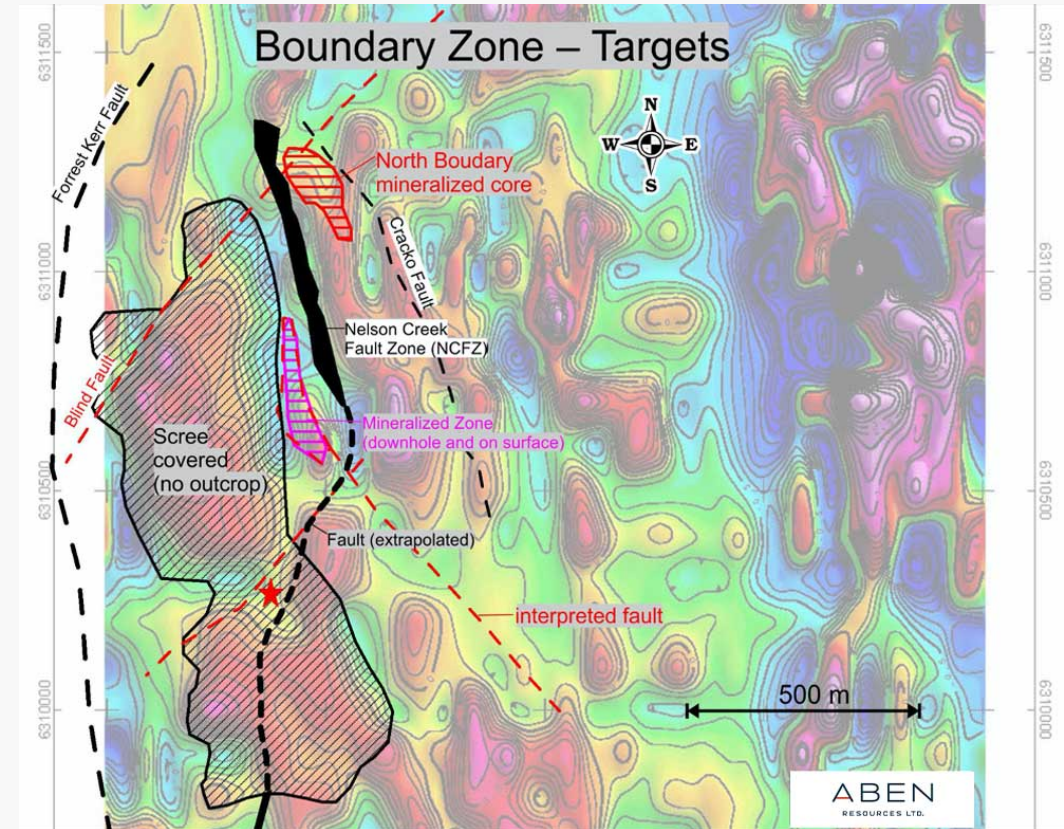


Mineralization at North and South Boundary

Exploration & Potential Drill Targets

Hatched magenta area on west side of Nelson Creek Fault Zone is a high priority target that combines strong surface and downhole polymetallic mineralization with only one drillhole through the zone.

- Area where the interpreted and extrapolated faults intersect is also highly prospective for gold discovery based on surface, downhole and geophysical indicators.
- One Dark black dashed line connects Benchlands Fault Zone to the Nelson Creek Fault Zone. Red star marks prospective area based on geophysics, but no surface data as the area is 100% scree covered.



Mineralized zone shown in hatched magenta area